

FRAMELESS-120W PMSM SPECIFICATION



megh neel

IR120-120W-240RPM

Highlights

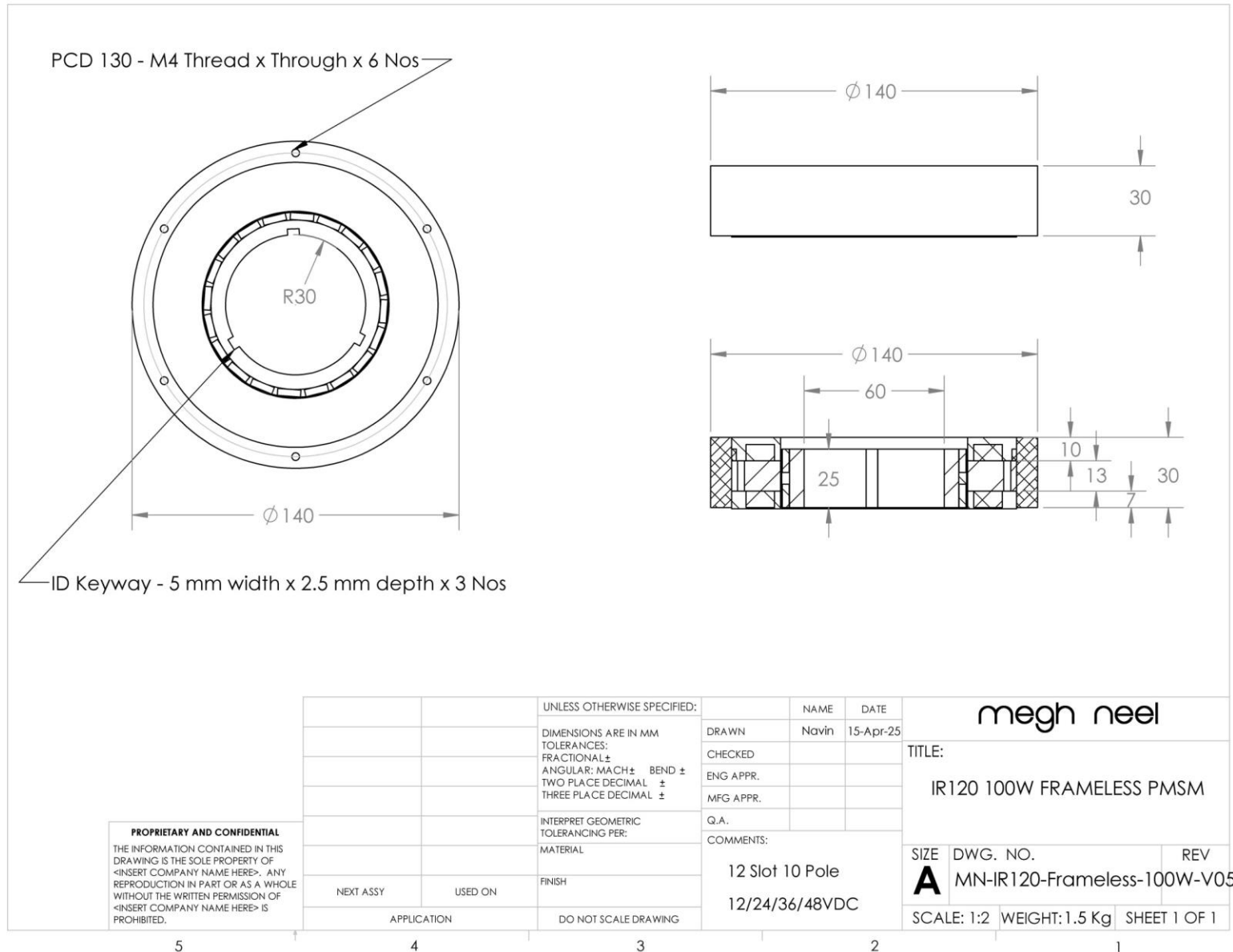
- ✓ 12 VDC, 120 Watts, 240 RPM, 3Phase PMSM
- ✓ Frameless In-runner with hollow rotor and key way locking mechanism
- ✓ External Control
- ✓ Built in Hall Sensors with Hall Effect Angle of 120 degrees
- ✓ Insulation Class F
- ✓ Maximum operating temperature of 80°C. Also available with max operating temperature of 150°C on request.
- ✓ Made in India

Specifications

Parameter	Value
Type of Motor	PMSM Frameless + SPM Rotor
Rated Voltage	12 VDC
Rated Current	10 A
Rated Input Power	120 Watts
Rated Speed (RPM)	240 RPM
Rated Torque (Nm)	4.3 Nm
Peak Torque (Nm)	9 Nm
No Load Current (A)	0.3 A
No Load RPM	435 RPM
Current Density (A/mm ²)	13 A/ mm ²
Variable Speed Range	0-435 RPM
Stator Dimensions	140 OD x 80 mm ID x 30 mm axial length
Rotor Dimensions	79 mm OD x 60 mm ID x 25 mm axial length
Number of Slots	12
Number of Poles	10
Inductance Ld, Lq (Per Phase)	1.85 mH, 1.85 mH
Resistance (Ohms Per Phase)	0.279 Ohms/Phase
Bemf Constant ($V_{LN(RMS)}/kRPM$)	11.26 ($V_{LN(RMS)}/kRPM$)
Country of Origin	India



Dimensions



Contact Information

Registered Office:

Megh Neel Renewable Power Systems Private Limited,
2/19, Elite Avenue,
Near Shivaram Nagar, Ganapathy,
Coimbatore – 641006

Mobile: +91-98410 79631 (Navin), +91-7708066207 (Sales)

Email: sales@meghneel.co.in

Web: <https://www.meghneel.co.in/>

Instagram: <https://www.instagram.com/meghneelpower/>

Facebook: <https://www.facebook.com/meghneelrenewable/>

LinkedIn: <https://www.linkedin.com/in/navincc>

Intellectual Property Rights

The information shared in this document is protected by Intellectual Property Rights and the receiving party shall refrain from disclosing, reproducing, summarizing and/or distributing Confidential Information and confidential materials obtained either directly or indirectly, in writing, orally, by inspection of tangible objects (including, without limitation, documents, prototypes, samples, media, documentation, discs and code).

